



MARTIN CITY DEVELOPMENT GROUND

13208-13222 Holmes Road, Kansas City, Missouri



SALE PRICE: \$2,000,000 | 3.025 ACRES

DEMOGRAPHICS

	1 mile	3 miles	5 miles
Estimated Population	3,159	36,328	141,780
Avg. Household Income	\$102,611	\$187,272	\$151,291

- Fully entitled land for small retail, restaurant, and services
- Zoned B1-1
- All utilities to site
- Up to 25,000 SF office or retail building
- Part of Martin City Revitalization
- Draw from Loch Lloyd, Blue Hills, Iron Horse, Leawood South communities

 [CLICK HERE TO VIEW MORE LISTING INFORMATION](#)

For More Information Contact: *Exclusive Agent*
BILL MAAS, CCIM | 816.412.7392 | bmaas@blockandco.com



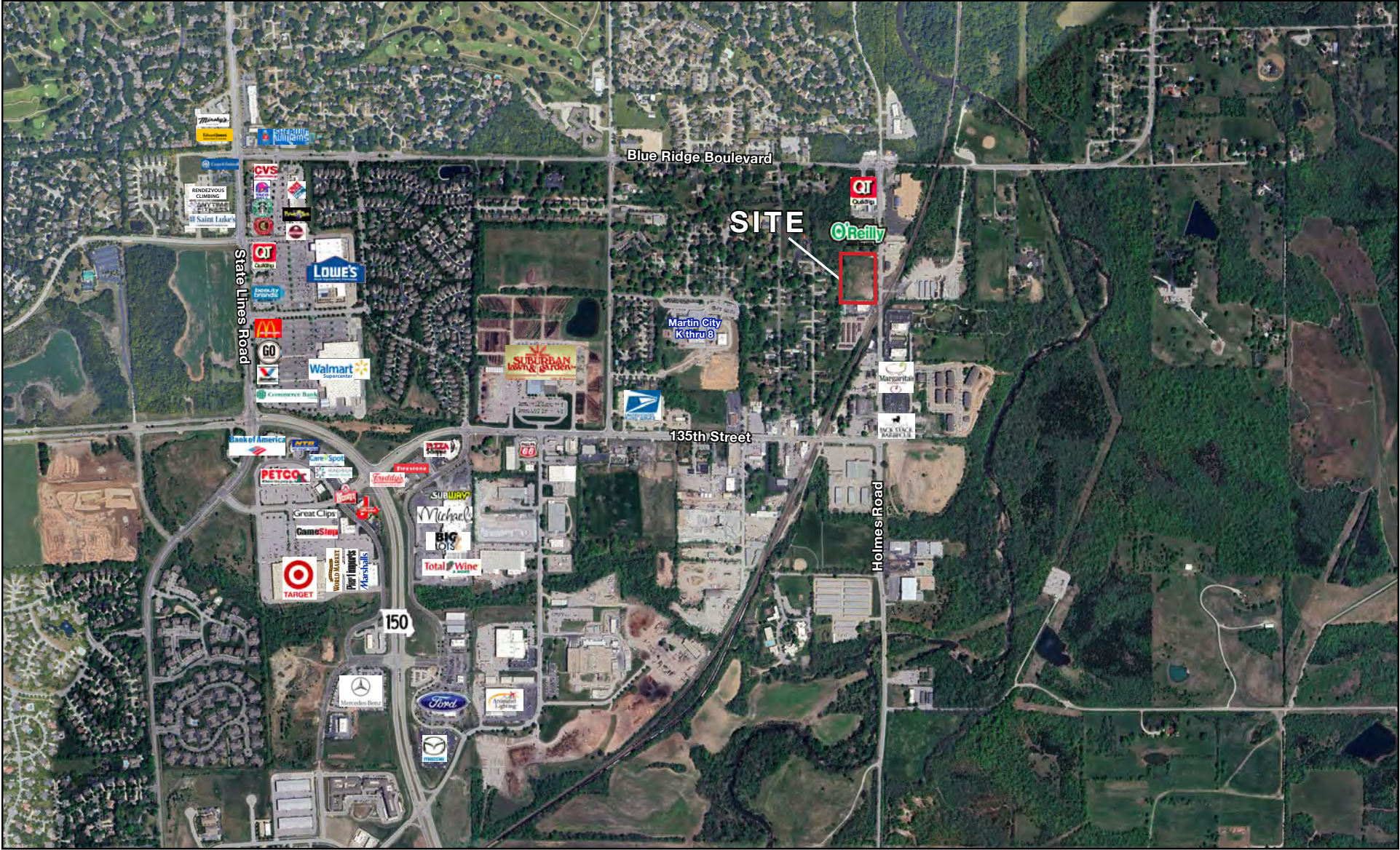
All information furnished regarding property for sale or lease is from sources deemed reliable, but no warranty or representation is made as to the accuracy thereof and the same is subject to errors, omissions, changes of prices, rental or other conditions, prior sale or lease or withdrawal without notice.



MARTIN CITY DEVELOPMENT GROUND

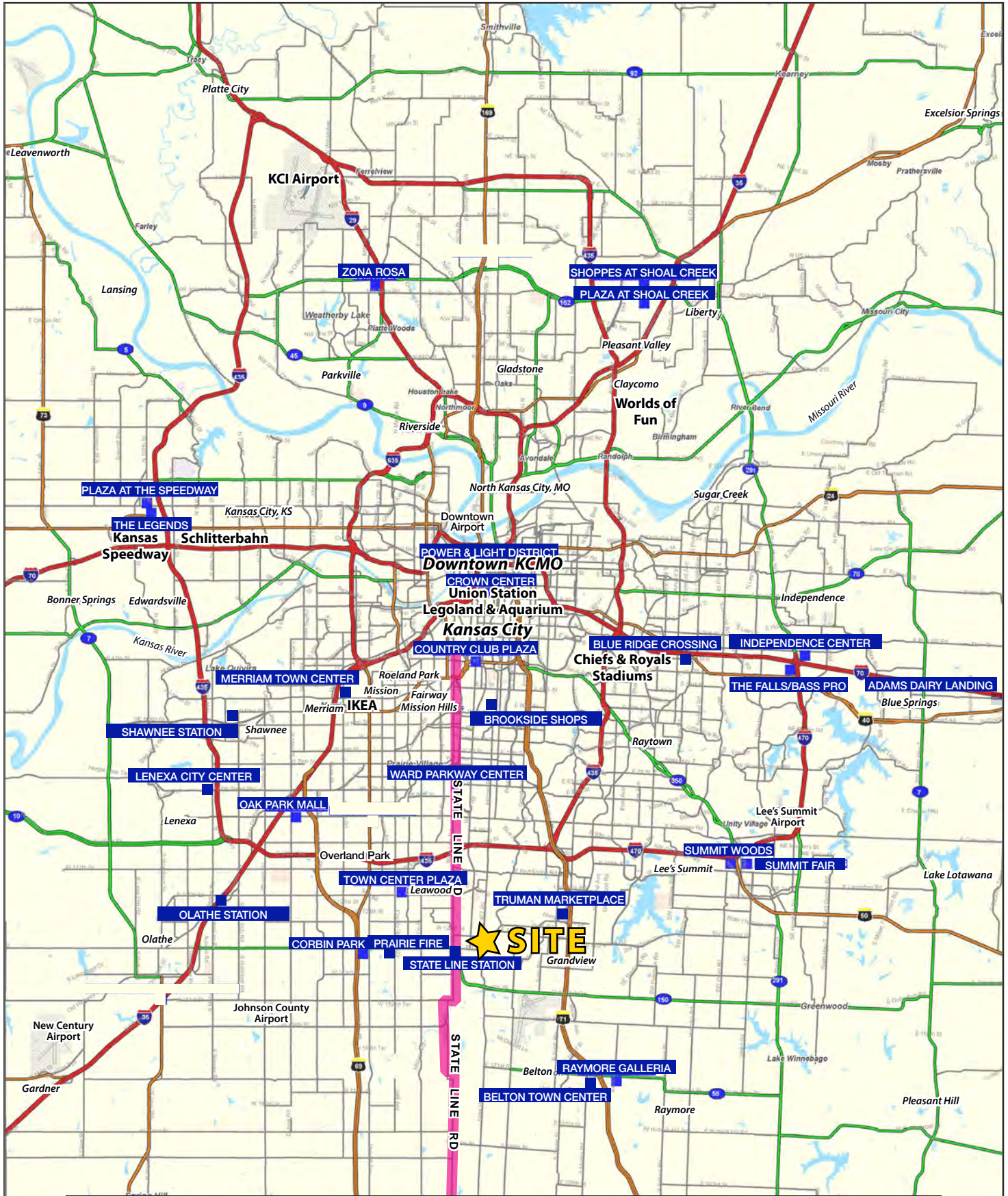
13208-13222 Holmes Road, Kansas City, Missouri

AERIAL



MARTIN CITY DEVELOPMENT GROUND

13208-13222 Holmes Road, Kansas City, Missouri





MARTIN CITY DEVELOPMENT GROUND

13208-13222 Holmes Road, Kansas City, Missouri

13208-13222 Holmes Road Kansas City, MO 64145	1 mi radius	3 mi radius	5 mi radius
Population			
2023 Estimated Population	3,159	36,328	141,780
2028 Projected Population	3,256	37,158	144,457
2020 Census Population	3,483	36,524	140,744
2010 Census Population	3,305	34,894	128,766
Projected Annual Growth 2023 to 2028	0.6%	0.5%	0.4%
Historical Annual Growth 2010 to 2023	-0.3%	0.3%	0.8%
2023 Median Age	53.1	45.0	41.9
Households			
2023 Estimated Households	1,532	14,879	59,704
2028 Projected Households	1,551	15,049	60,402
2020 Census Households	1,620	14,682	58,023
2010 Census Households	1,454	13,837	51,744
Projected Annual Growth 2023 to 2028	0.2%	0.2%	0.2%
Historical Annual Growth 2010 to 2023	0.4%	0.6%	1.2%
Race and Ethnicity			
2023 Estimated White	76.3%	76.2%	69.0%
2023 Estimated Black or African American	14.3%	10.8%	17.3%
2023 Estimated Asian or Pacific Islander	2.2%	5.0%	6.1%
2023 Estimated American Indian or Native Alaskan	0.3%	0.3%	0.3%
2023 Estimated Other Races	6.9%	7.6%	7.4%
2023 Estimated Hispanic	6.6%	7.2%	6.9%
Income			
2023 Estimated Average Household Income	\$102,611	\$187,272	\$151,291
2023 Estimated Median Household Income	\$89,781	\$123,587	\$107,476
2023 Estimated Per Capita Income	\$49,965	\$76,817	\$63,816
Education (Age 25+)			
2023 Estimated Elementary (Grade Level 0 to 8)	0.8%	1.0%	1.2%
2023 Estimated Some High School (Grade Level 9 to 11)	2.7%	2.0%	2.6%
2023 Estimated High School Graduate	16.6%	14.1%	16.8%
2023 Estimated Some College	20.4%	19.0%	18.6%
2023 Estimated Associates Degree Only	6.5%	6.2%	6.2%
2023 Estimated Bachelors Degree Only	33.9%	31.8%	31.5%
2023 Estimated Graduate Degree	18.9%	26.0%	23.1%
Business			
2023 Estimated Total Businesses	223	1,416	6,991
2023 Estimated Total Employees	2,993	17,496	104,937
2023 Estimated Employee Population per Business	13.4	12.4	15.0
2023 Estimated Residential Population per Business	14.2	25.6	20.3

©2024, Sites USA, Chandler, Arizona, 480-491-1112 Demographic Source: Applied Geographic Solutions 11/2023, TIGER Geography - RS1

